



presents

The Complete Power Distribution Show

distribu  **lec**
India's only exhibition on Hi-Tech Power Distribution

build  **lec**
A Unique Exposition on Building Electrical Systems

May 25-27, 2022 | BIEC Bengaluru



India and many other developing countries are expanding and improving their distribution network to supply 24x7 power to their citizens.

Growth in load and distributed generation brings new challenges for distribution network. Utilities are also deploying state of the art technologies to improve quality and reliability of supply and also reduce losses. These challenges can be overcome only with the amalgamation of electrical equipment and digital network technology.

Intelect 2022

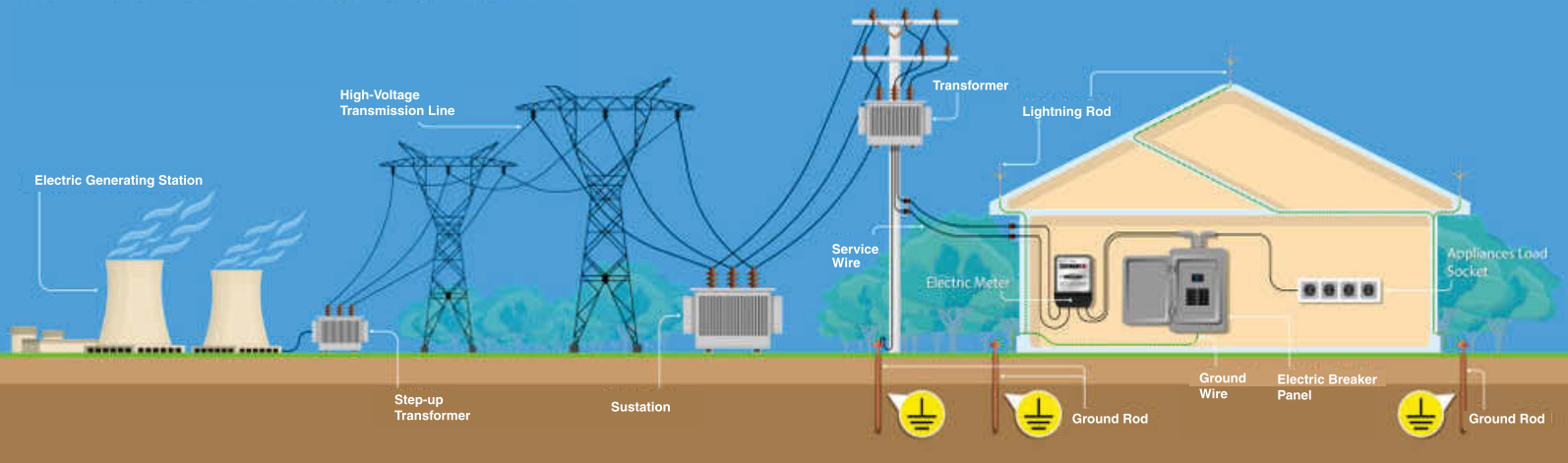
Concurrent conference
in its 5th edition.

Buildelec 2022

A concurrent exhibition
planned to showcase
electrical systems at
consumer dwellings i.e.
buildings - commercial and
residential, more efficient
and safe.

Distribuelec 2022

5th edition of an exhibition
designed to bring Power
Distribution stakeholders –
DISCOM, Consumer,
Electrical Operational
Technology (OT) and
Information Technology (IT) –
on one platform to
conduct business.



distribulec
 India's only exhibition on Hi-Tech Power Distribution

India's only Exhibition on Hi-Tech Power Distribution, showcasing products, technologies and services from 220V till 33KV in traditional electrical equipment like transformers, cables, capacitors, switchgears, meters, insulators, conductors and new age technologies in distribution automation & control systems, energy efficiency, demand response, advanced metering, communications technologies, cyber security, electrical fire safety and more.

This is a huge opportunity for the manufacturers of electrical equipment and technology providers to showcase the solutions which can help in Outage Management, Demand Management, Metering, MicroGrid, Storage, Sub-Station and Feeder Automation etc.





VISITOR PROFILE

The show will attract a host of serious decision makers from across all segments, to source new and innovative product and service solutions, stay in touch with the latest trends, network and do business.

Buyers

Public and Private Sector Utilities (DISCOMs)

EPC & Project Developers

Electrical Contractors

Bulk users such as:

- Industry
- Railways, Metros, Freight Corridors
- Defence
- PWD and Municipal Corporations

OEMs

Raw Material Suppliers

System Integrators

Vendors/ Sub Vendor

Renewable Energy (solar, solar PV, wind, biomass, small hydro)

Institutions

Central Govt. Ministries – Power, Urban Development, IT, Communication & MNRE among others

State Government – Power and Energy Departments

BIS, CEA, ICAI

Testing House & R&D Institutions

Consultants

Electrical Inspectorates

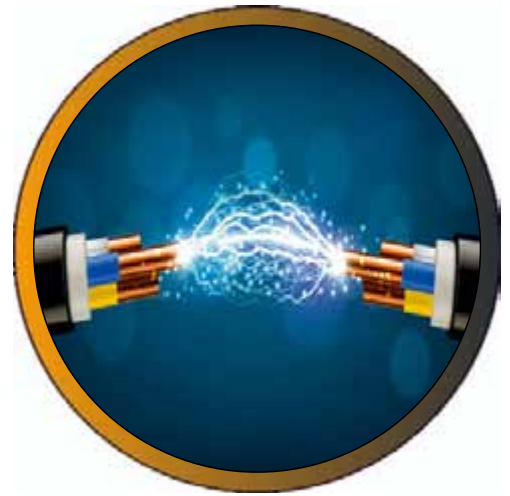
Engineering Institutions

EXHIBITOR CATEGORIES



ELECTRICAL EQUIPMENT

- Cable & Cable Accessories
- Capacitors
- Conductors & Conductor Hardware & Accessories
- Control Panels
- Energy Meter
- Industrial Control & Automation System
- Instrument Transformers
- Insulators & Insulating Materials
- Relays
- Switchgear
- Substation and Equipment
- Transformers



TEST & MEASUREMENT EQUIPMENT

- Cable Fault Locating Systems
- Calibration Equipment
- Electrical Testing Equipment
- Transformer Testing Equipment



DISTRIBUTED ENERGY RESOURCE

- Energy Grid Integration
- Energy Storage
- EV Charging Infrastructure
- Microgrids
- Renewable Energy Equipment
- Solar Inverters



DISTRIBUTION AUTOMATION

- AC/DC, DC/AC, DC/DC Converters
- Asset Management System with Sensors, DCUs etc.
- Auto Reclosures
- Circuit Breakers
- Control Systems
- Controls Panels/Components
- Data Acquisition Systems
- Data Analytics
- Demand Response Services
- Distribution Automatic Equipment
- Distribution Management System
- Energy Management Systems
- Fault Current Limiters
- Harmonic Measurement Equipment
- Leak Detectors
- Load Management Systems
- Outage Management System
- Ring Main Units (RMUs)
- SCADA



A concurrent event to showcase electrical systems for future building comprising of H3O – homes, hospitals, hotels & offices to generate, measure and manage their energy usage without compromising with comfort of living.

Future Buildings being the major consumption center of electricity, this event will be an exclusive platform for exhibiting conventional and smart electrical technologies and equipment to make buildings safer, efficient and intelligent structures.

VISITOR PROFILE

Architects & Interior Designers
Building Planners, Real Estate & SEZ Developers
Building Authority & Technology Service Providers
Building Maintenance professionals
Building Owners & Management
Central & State Public Works Departments
Chief Fire Officers
Civil & Electrical Engineers
Distributors, Electrical Traders

Design Studios & Consulting Companies
Electrical & Civil Contractors
Facility Management Professionals
High Net Worth Individuals
Industrial Users
Large Facilities (Hotels/Malls/Hospitals/Airports)
Surveyors
Systems Integrators



EXHIBITOR PROFILE



MEDIUM & LOW VOLTAGE PRODUCTS

- Switches, Switchgear
- Earthing, Lightning, Protection, Excess Voltage Protection
- Cables & Accessories, Cable Routing Systems
- LED and other light sources, Smart and decorative lighting
- Switches and Protection Devices
- LT Transformer
- Capacitors, APFC Panels, Active Harmonics Filters



BUILDING AUTOMATION

- Building Automation Systems & Products
- Building Efficiency & Energy Management Systems & Products
- Building Security Systems & Surveillance
- Light Control Systems, Light Management & Light Measurement
- HVAC
- Smart Sensors
- Smart Switching & Protective Devices
- Smart Metering, Monitoring & Measurement
- Smart Surveillance Systems
- Systems Integration



FIRE SAFETY

- Arc - Flash Detectors & Protection Relay
- Cable Lugs
- Earth Electrode
- Fire Retardant Cables & Wires
- Fire Alarm Systems
- Fire Detection & Suppression Systems
- Flame Proof Equipment like Starters, Push Buttons, Motors
- Heat & Smoke Detectors
- RCC-Residual Current Circuit Breakers
- Spark Detectors



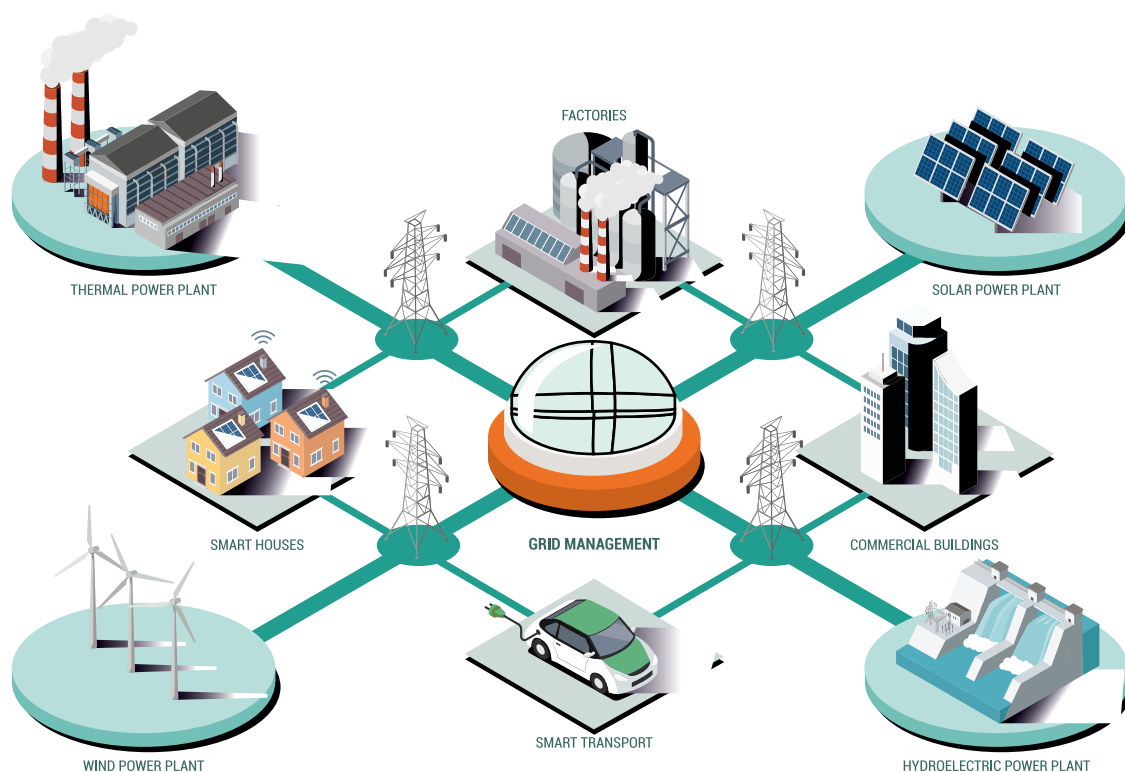
BUILDING UTILITIES

- Elevators & Escalators
- Green Energy – Solar Rooftop
- Batteries and Inverters
- EV Charging Infrastructure
- HVAC, Precision Air Conditioning
- IoT, Smart Tech
- UPS



A conference on Intelligent Electricity Distribution and consumption. The conference will explore the role of utilities in changed policy scenario, role of prosumers, emerging markets, making power sector green and sustainable by reducing carbon footprint. The first edition of Intelect conference was held in 2015 and since then the conference has evolved catering to the diversified themes like Intelligent Electricity,

The conference will be co-located with the Distribuelec and Buildelec, India's only exhibition on Hi-Tech power Distribution and Building Electrification Segment.



An abstract geometric composition featuring several overlapping triangles. A large yellow triangle is positioned in the upper right. A smaller orange triangle is located to its left. A dark blue triangle is situated below the yellow one. Another dark blue triangle is on the far left. The triangles overlap in a way that creates a sense of depth and movement. The background is white.

| Exhibitor Tariff - Distribuelec 2022 & Buildelec 2022 | | | | | | | |
|--|--|--|--------------|--------------|---|--------------|--------------|
| Category of Exhibitor | Bare space minimum 24 Sqm | | | | Shell Space minimum 9 sqm | | |
| | With open sides | | | | With open sides | | |
| | 1 side open | 2 sides open | 3 sides open | 4 sides open | 1 side open | 2 sides open | 3 sides open |
| IEEMA Member Exhibitor in immediate past 3 editions of ELECRAMA or Distribuelec/Buildelec or E3 (in INR) | 8500 | 9350 | 9775 | 10200 | 9000 | 9900 | 10350 |
| Other IEEMA Members (in INR) | 9000 | 9900 | 10350 | 10800 | 9500 | 10450 | 10925 |
| Non IEEMA Members (in INR) | 9500 | 10450 | 10925 | 11400 | 10000 | 11000 | 11500 |
| Foreign Participants (in USD) | 150 | 165 | 170 | 180 | 175 | 190 | 200 |
| SME/Start Up Indian Exhibitor (9sqm constructed booth) Note: With valid MSME Udyam Aadhar Certificate **(Stall Placement will be in SME Pavilion, subject to availability of stall) | | | | | Rs.60,000/- (1st booth) Rs 70,000/- (2nd booth) Max 2 booths only | | |
| Volume Discount | On booking 18 sqms and above in shell scheme and 40 sqms and above in bare space | | | | 5% | | |
| Premium Location Charge | Applicable on stalls B1, B2, B3, B4, B5, B6, B7, B8, F2 | | | | 5% | | |
| Note: 1. No Discount is applicable on SME tariff 2. IEEMA Member exhibitor discount applicable only with zero outstanding for previous participation | | | | | | | |
| Mezzanine Floor: Exhibitors who have booked the bare space area 60 sqms and above may be permitted to create a mezzanine floor up to 40% of the bare space booked subject to prior approval of the stall layout and in accordance with IEEMA Rules and Regulations | | | | | Amount Payable: 20% of the stall charges. | | |
| Payment Schedule | | | | | | | |
| Booking Date | Booking Amount | Final Payment | | | | | |
| On or Before 15.04.2022 | 25% | Balance 75% on or before 15th May 2022 | | | | | |
| From 16.04.2022 to 15.05.2022 | 100% | NA | | | | | |
| GST (at 18%) is applicable | | | | | | | |

GLIMPSES of the past



92%

Exhibitors want to participate in next edition.

88%

Exhibitors said the quality of attendees met or exceeded their expectations

95%

would like to visit this kind of an exhibition again.

Feedback from the past few editions

90%

Visitors favorably compared the quality of the exhibition over other industry events.

98%

Visitors said the quality of the exhibitions met or exceeded their expectations.

ORGANISER

The Indian electrical industry is represented by Indian Electrical and Electronics Manufacturers' Association (IEEMA), which was established in 1948 and is of approx. USD 50 billion. Comprising of two sections - generation equipment and transmission & distribution (T&D) and allied equipment, more than 90% of the installed electrical equipment in the country have been contributed by IEEMA members. Recognised as the first point of reference for anything pertaining to Power and Electrical Equipment, IEEMA plays a primary role to facilitate creation of a conducive environment for the growth of electrical industry by providing key services like Policy Advocacy. The Government officials laud IEEMA for its data backed representations. It also continues to represent the interests of its members, in consonance with National interest.

A prominent size and space is occupied by the Electrical Equipment and Machinery in the Capital Goods Sector, which is approx. 55 percent of the entire Capital Goods Sector. The industry is 7.73% of the manufacturing sector in terms of value and 1.23% of the GDP. It also provides direct and indirect employment to 1.5 million people and over 5 million across the entire value chain. The industry exported approx. USD 8 billion worth of electrical equipment in the last fiscal. IEEMA has set a target of USD 25 billion export target in next 5-7 years

Corporate Office:

Rishyamook Building, First Floor, 85A,
Panchkuian Road, New Delhi-110001

P: +91-11- 23363013/14, F: +91-11-23363015

Registered Office Mumbai:

501, Kakad Chambers, 132, Dr. Annie Besant Road,
Worli, Mumbai 400 018 India

P: +91-22-2493 0532, F: +91-22-2493 2705

For Booth & Sponsorship Opportunities, Contact

Intelect Conference

Mr Uttam Kumar

uttam.kumar@ieema.org
+91 97175 18502

DistribuELEC

Mr Murli Krishna

murlikrishna@ieema.org
+91 9980053992

BuildELEC

Mr Rajesh Parab

rajesh.parab@ieema.org
+91 97022 69598

